

sustainable living FABRICS

AUSTRALIAN DESIGNED AND MADE

GUIDE TO EDUCATION & AUDITORIUM DESIGN



WHY CHOOSE SUSTAINABLE LIVING FABRICS?

Sustainable Living Fabrics has been in the commercial textile industry for over 50 years and is proudly designed and manufactured in Australia using Australian wool. We pride ourselves on creating high quality Australian made fabrics with an environmental conscience.

As a small business, we design all our fabrics in house, giving us the freedom to work closely with our customers' needs, provide custom colours, as well as develop our ranges independently. Being locally manufactured we have the ability to easily monitor, develop and understand our supply chain so we can prioritise transparency across all levels.

We have developed and maintained a strong environmental ethos over the years and we continue to refine our practices to ensure we maintain transparency and accountability for our carbon footprint.

Our vision is to create products that don't harm our environment, are made to last and support Australian businesses. The beauty of choosing to use Sustainable Living Fabrics is that you don't have to compromise on price, aesthetics or creativity to design your project sustainably.

Check out our entire range by clicking [here](#).







CREATING A HEALTHY SPACE WITH WOOL

Creating spaces that are healthy and sustainable is a design priority, and the fabric you select can greatly impact the overall wellness of your indoor creative spaces.

Indoor Air Quality (IAQ) is an important consideration when designing a space. Our fabrics have been tested independently by the CETEC. All our fabrics have been certified as low VOC and contain no harmful substances. Wool also can further improve IAQ by absorbing and neutralising harmful pollutants from the air.

Wool is hypoallergenic. It is resistant to bacteria, mould and mildew that can trigger allergic reactions in many people. The fabric is also naturally anti-static. Static attracts lint, dirt, and dust so its anti-static properties keep it much cleaner for longer.

Dust mites don't like wool, they need moisture to survive. Microscopic pores in wool respond effectively to any minor changes in humidity making it quite unfavourable for the breeding and growth of the house dust mite.

Lastly, wool is naturally fire retardant and has superior self extinguishing qualities. Choosing a natural fibre such as wool is a simple way to enhance the quality, health and safety of your project.

To see more benefits of using wool [click here](#).



SUSTAINABILITY IN EDUCATION & AUDITORIUM DESIGN

If you didn't guess it from our name already, sustainability is at the forefront of everything we do. For the last 15 years we have prided ourselves on being leaders in sustainable design practices. We wanted to make it simple. All our ranges are suitable for green star projects or any environmental specifications your brief may contain.

With the market now being flooded with certifications and logos, it's important to understand what our certifications mean to us. We use two third party organisations as we believe there is greater accountability and transparency through this process and we get to partner with incredible initiative that are helping business like us do better.

Firstly, we have Climate Active, a government run voluntary initiative to certify our organisation and entire product line, carbon neutral from the farm to your door. We have carried this certification for 10 years.

We are also accredited through GECA (Good Environmental Choice Australia), who audit our entire supply chain to meet their stringent environmental requirements. GECA certification is recognised by the Infrastructure Sustainability Council of Australia, ISCA's IS rating program and can also contribute to WELL, NABERS (Indoor Air Quality) & LEED projects. For the last 15 years we have been GECA members as well as members of the Green Building Council Australia.

SLF is designed and made in Australia, made locally means less mileage, supporting local industries, as sustainability for us includes the health and quality of life of the communities that help bring our fabrics to life. We also proudly support through annual contributions, Green fleet and Bush Heritage Australia who both do incredible work helping to regenerate Australia's natural spaces.

At Sustainable Living Fabrics, we love wool, Australian wool in itself is a highly sustainable product, each year sheep produce a fleece, making wool a natural and renewable resource. With all our fabrics either compostable or recyclable at end of life, the entire loop is considered from cradle to cradle.

For more information on our accreditations or sustainability practices [click here](#).





AUDITORIUM & FIXED SEATING

Our ranges have been used across Australia for over 50 years on auditorium and fixed seating. When choosing your fabric for education projects, durability is key.

All of our upholstery fabrics have been developed, manufactured and tested independently in Australia, and meet the performance requirements of the stringent Australian Standards for Class 5 Commercial Heavy Duty Upholstery.

All our fabric ranges also come with a 12 year warranty, meaning no matter what you choose you can trust that it will maintain it's quality. Local manufacturing of all Our fabrics also means shorter lead times, ensuring your project moves along as scheduled.

When you are creating a space and thinking of the sustainability and longevity of the fittings it is important to consider what fabric will maintain it's impact years after the project is completed. Investing in quality materials from the beginning will have a lasting positive effect on any educational space.



ACOUSTIC PANELS & WALL COVERINGS

All of our fabrics can be used for acoustic panels, room dividers and wall coverings. Wool panelling can significantly improve the acoustic performance of rooms as it acts as a sound absorber and also dampens any impact noise in a room whilst providing thermal insulation allowing the room in which it is installed to remain a comfortable temperature.

The visco-elastic properties of wool assist in the conversion of sound energy to heat, therefore dissipating noise, wool does this much more efficiently than material like concrete or brick, especially in spaces with high ceilings.

This is ideal for educational spaces to create a calm and acoustically balanced space for students to learn in. It also helps improve the health of the space with the hypoallergenic and air purifying qualities of wool.

Please note that as our fabric is not a finished product, we recommend pairing our fabrics with an acoustic backing or board to receive full profile of how the product will enhance the space and to test for your NRC rating if necessary.





THE IMPORTANCE OF COLOUR

Our ranges are designed to be paired back with each other to match complementary and contrasting colours across a wide range of palettes.

Education in the design space can be bold and brave with colour choices. Colours are proven to have different impacts on the mood and overall atmosphere of a room.

The infographic to the right from the London Image Institute gives an example of research into what colours can communicate in space.

Spending the time to research and decide what qualities and emotions you want to evoke in a space is vital to how the design will be received by your client.

Get in touch with our your local rep for any specific recommendations or colour inspiration.



<p>Red</p> <p>Excitement Strength Love Energy</p>	<p>Orange</p> <p>Confidence Success Bravery Sociability</p>	<p>Yellow</p> <p>Creativity Happiness Warmth Cheer</p>	<p>Green</p> <p>Nature Healing Freshness Quality</p>	<p>Blue</p> <p>Trust Peace Loyalty Competence</p>
<p>Pink</p> <p>Compassion Sincerity Sophistication Sweet</p>	<p>Purple</p> <p>Royalty Luxury Spirituality Ambition</p>	<p>Brown</p> <p>Dependable Rugged Trustworthy Simple</p>	<p>Black</p> <p>Formality Dramatic Sophistication Security</p>	<p>White</p> <p>Clean Simplicity Innocence Honest</p>

(London Image Institute, 2020)



INSPIRATION

Selecting a textile range isn't always easy, especially if you are new to our fabrics. Here are a few projects to inspire you on your fabric selection journey.

Contact your local rep for any questions about pricing or to order samples.

SUSTAINABLE CHELSEA

Sustainable Chelsea is made using 100% Australian Wool. It is perfect to use on any indoor surface from pinboards and wall panelling to auditorium seating. The mechanical stretch of wool makes it a dream to work with and the 12 year warranty ensures long term durability.

ORIGIN: Designed & made in Australia

COMPOSITION: 100% Australian Eco Wool

MEASUREMENTS: Width 137cm. Roll Length: 30m Approx.

COLOURWAYS: 81 colours, No pattern repeat.

END USE: Seating, Screens, Acoustic Panels & Curtains

MARTINDALE ABRASION: 57,500. AS2001.2.25.2 Class 5 Commercial Heavy Duty Upholstery Fabric.





SUSTAINABLE CHELSEA MIX

Our Sustainable Chelsea Mix is uses the same weave as our Sustainable Chelea however one of the yarns has been treated to take the dye differently, resulting in a mottled texture.

ORIGIN: Designed & made in Australia

COMPOSITON: 100% Australian Eco Wool

MEASUREMENTS: Width 137cm. Roll Length: 30m Approx.

COLOURWAYS: 16 colours, No pattern repeat.

END USE: Seating, Screens, Acoustic Panels & Curtains

MARTINDALE ABRASION: 57,500. AS2001.2.25.2 Class 5 Commercial Heavy Duty upholstery Fabric



SUSTAINABLE RENEGADE

Sustainable Renegade is one of our eco-polyester collections and is used for upholstery, wall panelling, screens and more. The range, as with all our ranges, is Type 1 GECA certified and certified carbon neutral through Climate Active.

This range can be paired with our 'ULTIMATE Healthcare Treatment' which provides a water repellent, stain resistant, anti-fungal and anti-bacterial protection.

ORIGIN: Designed & made in Australia

COMPOSITION: 100% Eco-Polyester

MEASUREMENTS: Width 137cm. Roll Length: 30m Approx.

COLOURWAYS: 32 colours. No pattern repeat.

END USE: Seating, Screens, Acoustic Panels & Curtains

MARTINDALE ABRASION: 55,500. AS2001.2.25.2 Class 5 Commercial Heavy Duty Upholstery Fabric.





SUSTAINABLE OPERATOR

This range has brilliant bright pops of colour paired back with a deep grey marled yarn which gives the impact of colour as well as a two tone texture. The dark grey weft also helps to hide stains and keep the fabric looking fresher for longer.

ORIGIN: Designed & made in Australia

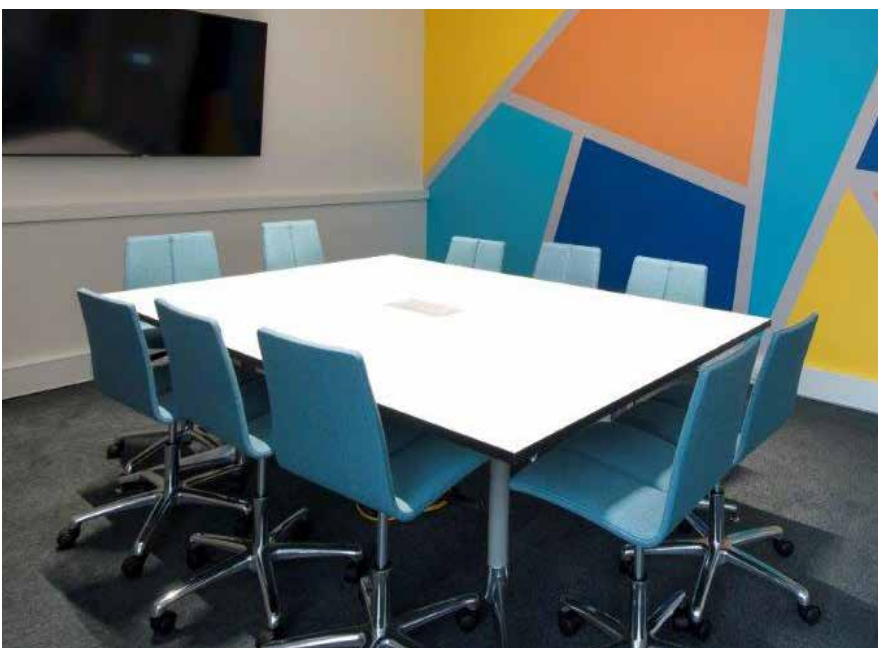
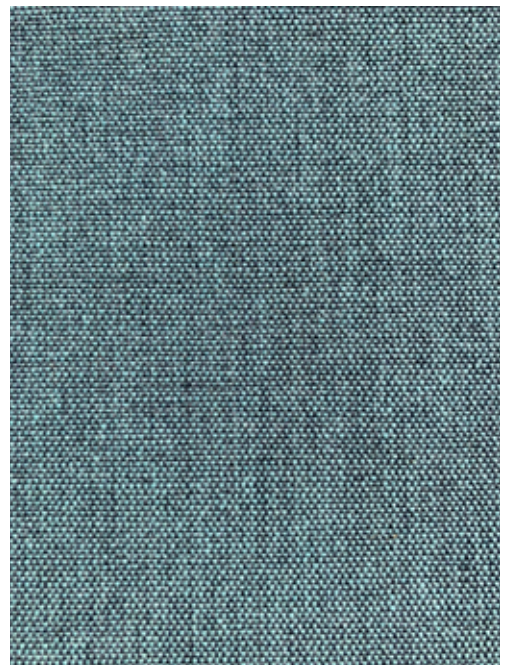
COMPOSITION: 95% Australian Eco Wool, 5% Nylon

MEASUREMENTS: Width 150cm. Roll Length: 30m Approx.

COLOURWAYS: 8 colours, No pattern repeat.

END USE: Seating, Screens, Acoustic Panels & Curtains

MARTINDALE ABRASION: 56,000. AS2001.2.25.2 Class 5 Commercial Heavy Duty Upholstery Fabric.



SUSTAINABLE TEKNEKO

Sustainable Tekneko has 6 different reversible colourways. This fabric has bold pattern was designed for education spaces, bringing fun and contrast into your next project.

ORIGIN: Designed & made in Australia

COMPOSITION: 60% Australian Eco Wool, 40% Eco-Polyester

MEASUREMENTS: Width 137cm. Roll Length: 30m Approx.

COLOURWAYS: 6 colours, reversible. Pattern repeat H17.5cm x W18cm approx.

END USE: Seating, Screens, Acoustic Panels & Curtains

MARTINDALE ABRASION: 50,750. AS2001.2.25.2 Class 5 Commercial Heavy Duty Upholstery Fabric.



FABRIC TREATMENTS

GREENSEAL COMMERCIAL TREATMENT

Our GREENSEAL Commercial treatment is certified Carbon Neutral through Climate Active.

GREENSEAL Commercial Treatment is a stain resistant, water repellent fabric treatment for upholstery requiring extra protection against soiling in high traffic environments.

This treatment can be applied to our entire range of Sustainable Living Fabrics. The fabric is immersed in the GREENSEAL Commercial Treatment solution, providing an invisible, highly water repellent, flexible Nano-structure which shields and protects the fabric from soil and stains. The treatment keeps the fabric breathable and moisture vapour permeable unlike waterproof fabrics that trap air and moisture which can cause odour, mold and mildew to grow. The GREENSEAL Commercial Treatment does not change the appearance or feel of the fabric.

The GREENSEAL Commercial Treatment is resistant to liquid and stains. The nanoparticle treatment reduces adhesion, allowing spills to be easily dabbed away with a clean dry cloth.

BREATHABLE	Moisture Vapour permeable to BS3546
STAIN RESISTANT	Treated for liquid and stain resistance.
CARE LABEL	Care Label 3 for soil resist.
LEADTIME	2-4 weeks, no minimums.
WARRANTY	5 years.



ULTIMATE HEALTHCARE TREATMENT

Our ULTIMATE Healthcare Treatment is a certified Carbon Neutral product suitable for healthcare environments such as hospitals, doctors clinics, health centers and aged care facilities. The ULTIMATE Healthcare Treatment is resistant to stains, moisture, odours, mildew, fungus and bacteria.

The ULTIMATE Healthcare Treatment is a full immersion medical treatment with active biocidal properties that kill bacteria on the surface as well as the bacteria that tries to grow in the spaces between the fibres formed by the weave structure.

The fabric is immersed in the ULTIMATE Healthcare Treatment solution, providing an invisible, highly water repellent, flexible Nano-structure which creates a shield to protect the fabric from not only soil and stains but includes anti-bacterial, anti-fungal, and dust mite controls. A water resistant silicone backing is applied to the fabric for an extra layer of protection.

This treatment can be applied to the entire range of Sustainable Living Fabrics textiles. The ULTIMATE Healthcare Treatment will NOT change the surface appearance of the fabric.

*Please note that due to the medical grade anti-fungal, anti-bacterial properties the ULTIMATE Healthcare Treatment does not carry the GECA Type 1 Ecolabel.

WATER RESIST	To BS3254
BREATHABLE	Moisture Vapour permeable to BS3546
STAIN RESISTANT	Treated for liquid and stain resist.
ANTI-BACTERIAL	Resistant to common bacteria such as MRSA, E Coli, and Salmonella. Inhibits the growth of other bacteria.
ANTI-FUNGAL	Resists common fungi that cause household moulds such as Penicilium, Aspergillus Niger, Candida, etc.
CARE LABEL	Care Label 3 for soil resist.
LEADTIME	2-4 Weeks, no minimums.
WARRANTY	5 years.



sustainable living FABRICS



Please consider the environment before printing this document.

Sources for all project images used can be found on our website.

CONTACT US

Tel: 03 8544 3500

sales@sustainablelivingfabrics.com.au

7 Enterprise Court Mulgrave, VIC
Australia, 3170



www.sustainablelivingfabrics.com.au

Copyright © 2020. Sustainable Living Fabrics Pty Ltd. All rights reserved.